

Menuet (1)

The image displays a musical score for a Minuet (Menuet) in F major, 3/4 time, originally from the Suite X for Viola d'amore and Continuo. The score is presented in two systems, each with a Viola d'amore staff (treble clef) and a Continuo staff (bass clef). The key signature is one sharp (F#), and the time signature is 3/4. The piece begins with a treble clef and a key signature of one sharp. The first system covers measures 1 through 4. The second system starts at measure 5 and includes a repeat sign at the end. The third system starts at measure 11 and includes a repeat sign. The fourth system starts at measure 15 and includes a repeat sign. The score concludes with a final cadence. A large, diagonal watermark reading 'SAMPLE PAGE' and the website 'www.helblingchoral.com' is overlaid across the entire page.

Menuet (2)

Musical notation for measures 1-5 of Menuet (2). The score is in 3/4 time with a key signature of one sharp (F#). It features a treble and bass clef. The melody in the treble clef starts with a quarter rest, followed by a quarter note G4, and continues with eighth and quarter notes. The bass clef provides a steady accompaniment of quarter notes. Asterisks are placed above the first and fifth measures of the treble staff.

Musical notation for measures 6-11 of Menuet (2). The notation continues from the previous system. A repeat sign is present at the end of measure 11. The treble clef melody continues with eighth and quarter notes, while the bass clef accompaniment remains consistent.

Musical notation for measures 12-16 of Menuet (2). The notation continues from the previous system. The treble clef melody features a sequence of eighth notes, and the bass clef accompaniment continues with quarter notes.

Musical notation for measures 17-21 of Menuet (2). The notation continues from the previous system. The treble clef melody consists of quarter notes, and the bass clef accompaniment continues with quarter notes.

Musical notation for measures 22-26 of Menuet (2). The notation continues from the previous system. The treble clef melody features a sequence of eighth notes, and the bass clef accompaniment continues with quarter notes. An asterisk is placed above the final measure (measure 26).

Rondeau

The first system of the Rondau piece consists of two staves. The upper staff is in a 3/8 time signature with a key signature of one sharp (F#). The lower staff is in a 3/8 time signature with a key signature of one flat (Bb). Both staves contain rhythmic patterns of eighth and sixteenth notes. A repeat sign is present at the beginning of the first measure, and an asterisk is placed above the eighth measure.

The second system of the Rondau piece consists of two staves, continuing the rhythmic patterns from the first system. The notation is consistent with the previous system, maintaining the 3/8 time signature and key signatures.

The third system of the Rondau piece consists of two staves, ending with a 'Fine' marking above the first measure of the system. The notation continues with rhythmic patterns in 3/8 time.

The fourth system of the Rondau piece consists of two staves, continuing the rhythmic patterns. The notation is consistent with the previous systems.

The fifth system of the Rondau piece consists of two staves, continuing the rhythmic patterns. The notation is consistent with the previous systems.

The sixth system of the Rondau piece consists of two staves, continuing the rhythmic patterns. The notation is consistent with the previous systems.

43

50

57

64

72

81

Menuet (3)

7

13

19

25

Menuet (4)

Musical notation for measures 1-5 of the Minuet (4). The score is in 3/4 time with a key signature of one flat (B-flat). It features a treble and bass clef staff with a 15/8 time signature. The melody is primarily eighth and sixteenth notes.

6

Musical notation for measures 6-12 of the Minuet (4). The score continues with the same 15/8 time signature and key signature. It includes repeat signs at the end of the system.

13

Musical notation for measures 13-16 of the Minuet (4). The score continues with the same 15/8 time signature and key signature. It includes repeat signs at the beginning and end of the system.

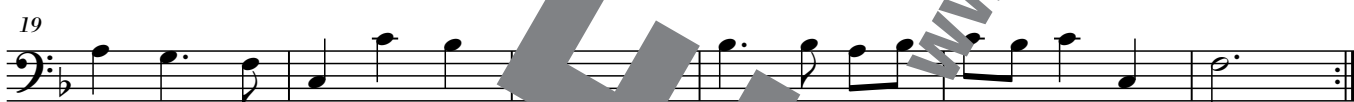
17

Musical notation for measures 17-20 of the Minuet (4). The score continues with the same 15/8 time signature and key signature. A fermata is placed over the final measure (measure 20).

21

Musical notation for measures 21-24 of the Minuet (4). The score concludes with the same 15/8 time signature and key signature. It includes repeat signs at the end of the system.

Menuet (1)



Menuet (2)



Rondeau

§

10

Fin

21

32

42

53

#6

64

#

6 6 4 3

b

76

§

Menuet (3)

9

19

28

Menuet (4)

6

19